



2025 MISSOURI
DEPARTMENT OF HEALTH
AND SENIOR SERVICES

Organ Donation Advisory Committee Annual

REPORT

LIVE LIFE, GIVE LIFE

Contents

| | |
|--|-----------|
| Organ Donation Letters | 3 |
| Organ Donation Advisory Committee Report..... | 4 |
| Donor Family Recognition Takes Flight..... | 5 |
| Organ and Tissue Donor Program Highlights | 6 |
| Organ Donor Program Fund | 8 |
| Missouri Kidney Program | 9 |
| Celebrate Life: A Banner Day | 10 |
| A National Model | 11 |
| A Christmas Miracle: Sight Restored..... | 12 |
| Honoring Missouri Donor Hero Joe Hecht | 13 |
| Donate Life Missouri Registry | 15 |
| Transplant, Donor Heroes, and Waitlist Statistics | 16 |
| Missouri Candidates Ever Waiting by Race/Ethnicity..... | 17 |
| Registration by License Office | 18 |

Organ Donation Letters



From the Chairperson, Kevin Lee

Across Missouri, more than 1,500 individuals are waiting for life-saving organ transplants. The dedication of health care professionals, volunteers, and the Organ Donation Advisory Committee (ODAC) reflects a shared commitment to raising awareness about organ, tissue, and eye donation.

As we begin a new year, we look forward to strengthening collaboration and ensuring all Missourians have the information needed to make informed decisions. The Missouri Organ and Tissue Donor Program remains focused on maintaining the statewide donor registry through education, innovation, and public engagement.

While progress has been made, continued outreach is essential. Sharing this message can truly mean the difference between life and death. We envision a future where no one waits for a transplant, and every life has a chance.

Let us honor the selfless acts of our donor heroes and ensure their legacies live on through the lives they save.

Until no one is waiting, Kevin Lee



From the Director, Sarah Willson

One person makes a difference!

The gift of life is among the most thoughtful and selfless acts one can offer. Heartfelt thanks to the Organ Donation Advisory Committee members for their guidance, support and commitment to Missouri's Organ and Tissue Donor Program. Their life-saving work and dedication truly strengthens organ donation across Missouri.

I had the opportunity to attend the Donor Family Recognition program in April and later tour Mid-America Transplant's donor care facility. These events were inspiring as I took a few moments to reflect on all of those involved including the donors, families, recipients, medical staff, program staff and community members. Their kindness leaves an immeasurable legacy of hope, healing and encouragement.

Together, let's honor these gifts of life, healing, and sight. Thank you to all registered donors and advocates. If you haven't yet, join the [Donate Life Missouri Registry](#)—your support can transform countless lives.

Gratefully, Sarah Willson

Advisory Committee

Organ Donation Advisory Committee Report

Members

Kevin Lee, Chairperson
Term: 2022-Present
Organ Procurement Organization

Lori Clark, Vice-Chairperson
Term: 2024-Present
Organ Procurement Organization

Virginia Beatty, Secretary
Term: 2006-Present
DHSS Representative

Jan Finn, Member
Term: 1999-Present
Organ Procurement Organization

Peter Nicastro, Member
Term: 2006-Present
Organ Recipient

Lori Pace, Member
Term: 2024-Present
Organ Donor/Recipient/Family

Annie Kuhl, Member
Term: 2024-Present
Tissue Procurement Organization

John Duckett, Member
Term: 2024-Present
Hospital Representative

Two organ donor/recipient/family positions are currently vacant.

Activities

In fiscal year 2025, the committee focused on reviewing and modifying bylaws, hosting the Donor Family Recognition Program, maintaining fiscal accountability, filling vacant positions, and discussing the national registry and federal policy changes and the impact to Missouri citizens.

Committee members formed a subcommittee to review and draft changes to the bylaws and draft standing rules. The subcommittee continues to work on both documents.

The Donor Family Recognition Program honors donors and their families annually. You can find this story on page 5.

The committee suggested that the department not pursue any fundraising strategies. The current balance of the Organ Donor Program Fund will support the state registry and program efforts for approximately two years. Page 8 provides a budget summary. The fund is the only source of funding for state program efforts and registry operation and maintenance.

The federal government continues to work toward making organ and tissue donation processes better and safer. Missouri has two of the strongest organ procurement organizations in the country, both ranking at the highest level: Tier One. Impact to Missouri will continue to be monitored, discussed, and shared with department leadership.

The national registry, RegisterMe, continues to expand entry pathways, giving people the option to sign up through electronic medical records. However, hospitals and clinics providing this option to their patients cannot see this designation. The registration is uploaded directly into the national registry.

If you are an organ or tissue recipient, donor family member, or a living donor and have an interest in the committee, visit the [Organ Donation Advisory Committee page](#).

Lived Life, Gave Life

Donor Family Recognition Takes Flight

By Ian Collins, Missouri Department of Health and Senior Services

10th Annual Donor Family Recognition Program

The Organ and Tissue Donor Program, along with its partners, celebrated the 10th annual Donor Family Recognition Program April 16, 2025, in Jefferson City, Mo. The program honored 74 Missourians who gave the gift of life in 2024 through organ, eye, and tissue donation. Nearly 190 family members were in attendance.

During the event at First Baptist Church of Jefferson City, families enjoyed painting mini canvases, making bracelets, creating origami birds, and speaking with each other about their experiences. Families were provided a wooden bird in remembrance. Many families visited the Donor Paver Stone on Adrien's Island that honors Missouri organ, eye, and tissue donors and visited with Donate Life Missouri partner organizations at the Capitol.

Baker Creek Heirloom Seed Company and Missouri Wildflowers Nursery donated seeds, and the Missouri Department of Conservation donated plants. The seeds and plants were given to families to plant in honor of their loved ones. Natural Grocers of Jefferson City provided healthy snack items for families to enjoy. Families were also provided a picture of their loved one in a photo mat with the words "Lived Life, Gave Life" to place on the picture wall and to take home and frame.

Sarah Willson, director of the Missouri Department of Health and Senior Services, was joined by Alicia Jenkins, deputy director of the DHSS Division of Community and Public Health, to present a certificate and tribute coin to each donor family during the ceremony. Program speakers shared powerful stories of how donation or transplantation impacted their lives. Families also shared many powerful and emotional stories about their loved one during the event.



Event partners and sponsors:

- Organ Donation Advisory Committee
- Mid-America Transplant
- Midwest Transplant Network
- Saving Sight
- Gift of Life
- Missouri Kidney Program
- Missouri Department of Conservation
- Missouri Department of Revenue
- Baker Creek Heirloom Seed Company
- Missouri Wildflowers Nursery
- First Baptist Church of Jefferson City
- Natural Grocers-Jefferson City



Organ and Tissue Donor Program Highlights

By Virginia Beatty, Missouri Department of Health and Senior Services

Donate Life Missouri Registry

In May 2025, changes to improve public access, organ procurement documentation and the administrative search function were made to the organ donor registry.

Additionally, after consulting with the Missouri Department of Revenue's Division of Motor Vehicles (DMV), the Organ and Tissue Donor Program began work to align registry changes with the launch of the new driver licensing system. Missourians who say "no" to the registration question at their local DMV are now automatically removed from the registry if they previously said "yes" to the registry question. Paper and online removal options remain available to the public, as the state has a six-year renewal cycle for driver's licenses and identification cards. The program aims to provide the public with convenient options.

Signatures collected at the DMV now become a part of the registry record and appear on the document of gift. The organ procurement organization (OPO) representative can print the document of the gift and share it with the donor's family.

Email addresses provided by the public who are registering or removing their name from the registry are now a searchable field for registry administrators only. If a confirmation email is returned as undeliverable, staff can locate the individual's record and mail a confirmation letter.

DMV changes took effect Nov. 12, 2024.

Community Outreach

The Organ and Tissue Donor Program is planning and coordinating logistics for staff and partners to exhibit at the 2026 Missouri State Fair. A booth in the Mathewson Exhibition Center will have educational material, staff and volunteers to answer questions about organ, eye and tissue donation and kidney health, and to provide free blood pressure screenings.

Educational and registry efforts will continue through March 2026 with the Missouri General Federation of Women's Clubs. This partnership continues to educate club members and the public through newsletter articles and social media posts. President Sandie Neal (2024-2026) chose organ and tissue donation as the president's project, which included education and fundraising, and meeting with the Organ and Tissue Donor Program in 2024. She encouraged and challenged club members to take action in her inaugural newsletter. She stated, "Donate Life helps families, on both sides of the story, to transition one life into another life. If we could just give a person one more, 2 more, 5 more or even 10 or more years with their family, why wouldn't we? A simple act of kindness can change a family's life forever, as I know it changed mine. People can be living donors as well, giving blood, helps in more ways than most of us think. My goal, as I said, is to raise money, awareness and people to sign up to be an organ donor the next two years."

Ms. Neal's project goal was to raise \$6,500 over her two-year term. As of December 2025, club members have raised over \$4,500.

The program attended community events at a variety of locations, including civic clubs, conferences, lunch and learns, churches and state offices during fiscal year 2025. Events included community booths at health fairs and presentations, reaching over 3,000 people.

Program staff continue to assist Gift of Life with reaching Missouri school districts about the Learn Life Savers Program. The program educates students about the fact they will be asked if they want to be a donor at their local license office.

Continues on the next page.

The program also encourages students to talk with their loved ones about being a registered donor with their loved ones.

The program also implemented a media campaign in the North Central, Central, Southwest and Southeast Missouri areas. The media campaign was aired in English and Spanish for three months. The campaign, aimed to inform the public and encourage enrollment in the Donate Life Missouri Registry, resulted in increased enrollments in several counties.

Share Your Story

The program collects, shares, and celebrates people who have been touched by organ, eye or tissue donation. Perhaps you are a living donor, a person waiting for an organ or tissue transplant, someone who received an organ transplant, or a family member of a donor or a recipient. Your story can inspire others to learn more about donation, talk with their family and friends, and make a decision about registering to be a donor. Others, just like you, have shared their story.

These [video stories](#) are available
4564.

online. If you want to share your story, call toll-free 888-497-



Organ Donor Program Fund

By Virginia Beatty, Missouri Department of Health and Senior Services

Together for a Cause, Investing in Life

Missourians are generous, giving more than \$742,000 to the Organ Donor Program Fund in fiscal year 2025. Gifts were made through their local license offices, supporting the “Be a Donor” license plate or through their tax returns in memory of loved ones and through an organization’s challenge. The state treasurer invests donated funds that are not required for immediate disbursement. Investing these funds embodies responsible planning and management and represents the DHSS value of integrity.

All financial gifts to the Organ Donor Program Fund support the Donate Life Missouri Registry, the annual Donor Family Recognition Program, education efforts and the Organ and Tissue Donor Program. The [Donate and Support](#) webpage provides information on ways Missourians can support the program. The following table provides a summary of the fiscal year 2025 program budget. Personnel services supports program, education and registry operations.

FY2025 Budget

7.1.2024-6.30.2025

| | Budgeted | Actual |
|---|-----------------|-----------------|
| Available Cash Balance | \$ 424,353.36 | \$ 424,353.36 |
| Revenue | \$ 353,360.00 | \$ 742,707.77 |
| Expenses | | \$ 505,223.67 |
| Personnel | \$ (274,454.00) | \$ (274,928.91) |
| Education and Program Initiatives | \$ (106,300.00) | \$ (42,440.22) |
| Program Operations | \$ (15,200.00) | \$ (7,382.83) |
| Registry Operations | \$ (171,000.00) | \$ (180,471.71) |
| Refunds | \$ (25.00) | \$ (0.00) |
| Projected Available Ending Cash Balance | | \$ 661,837.46 |
| Dept. Operations/Network Costs | | \$ 144,622.96 |
| Fund Ending Cash Balance (6.30.2025) | | \$ 806,460.42 |



Educate, Inspire, Share

Missouri Kidney Program

by Lisa Parnell, Director, Missouri Kidney Program

About The Program

The Missouri Kidney Program (MoKP) is a state-funded organization that provides financial assistance to eligible Missourians who suffer from end-stage renal disease or have received a kidney transplant. The program also supports education and research, partnering with dialysis and transplant centers to help reduce the burden on the national kidney waitlist.

Transplant Assistance

MoKP provides reimbursements for non-medical expenses related to kidney transplant recipients or living donors. This can include lost wages due to time off work for surgery or travel expenses. There are many hurdles to obtaining a transplant, and these funds help alleviate some of those barriers. MoKP also fosters relationships with the transplant centers and dialysis clinics in the state. Visit MoKP's [assistance program](#) website for more information.

My Transplant-Ready Workbook – Second Edition

In 2024, DHSS collaborated with MoKP and Health Literacy Media to publish the second edition of “My Transplant-Ready Workbook” in English and Spanish. The workbooks were distributed to every dialysis clinic and transplant center in the state for their patients who are ready to pursue a transplant. Complimentary workbooks are available upon request or downloadable from the Patient Education – Missouri Kidney Program website.



Photo Caption: Missouri Kidney Program Staff Members. Rhonda Victor, Lionelle Miller, Melissa Kraph, Lisa Parnell, Alison Viehmann, Kendall Chenevert, Anna Sumner, and Tammy Turner

Impacting Lives

MoKP encourages its mission through ongoing collaborations with valuable partnerships, including the seventh year of the [Chronic Kidney Disease \(CKD\) ECHO](#) with the University of Missouri, which offers short didactics and case presentations from medical health professionals. The CKD ECHO webinars take place on the first and third Thursdays of each month, from 12-1 p.m. CST. Show Me ECHO is offering Maintenance of Certificate Part II credits.

Educate, Inspire, Share

Celebrate Life: A Banner Day

by Lindsey Grizzelle, Mid-America Transplant

Annual Celebrate Life 5K Run/Walk

Mid-America Transplant hosted its Annual Celebrate Life 5K Run/Walk with record success in 2025. This inspiring event brought the St. Louis transplant community together to raise awareness about organ, tissue, and eye donation and celebrate the incredible gift of life.

In the Garden of Heroes, over 150 donor heroes were honored, creating a beautiful space to reflect on the generosity of donor families and their support of the ultimate gift. This year was one of our biggest events yet, with over 2,300 participants registered. This was the highest number of attendees since 2020 and 40 percent higher than 2024! Two standout teams each had more than 100 members, and one even crossed the Mississippi River by ferry to join us at Forest Park in St. Louis.

Behind the scenes, nearly 100 volunteers and staff members worked tirelessly to ensure a smooth experience, from packet pick-up to event setup. Their dedication made the day possible.

The Celebrate Life 5K is more than a race; it's a movement. This event is a fun, meaningful way to bring people together in support of our mission to save lives. Mid-America Transplant is focused on strengthening communities by not only serving as the link between patients awaiting organ and tissue transplants and those who donate, but also as a community of support and compassion for those impacted by organ and tissue donation.



Educate, Inspire, Share

A National Model

by Kim Harbur and Lizzie DeWitt, Gift of Life



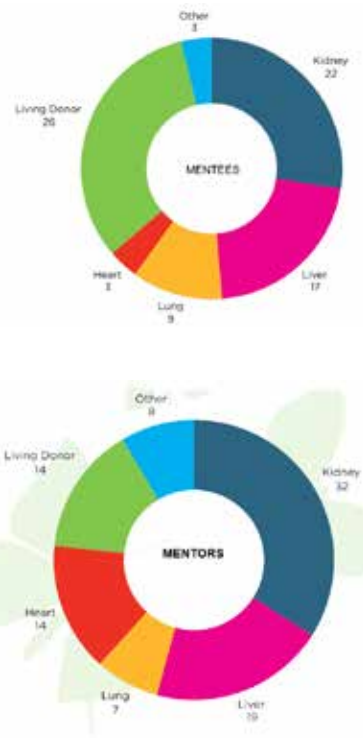
The Organization

Gift of Life is a national model for support, awareness and success of organ, eye and tissue donation through education, mentoring and collaboration with partners and individuals in the transplant community. Visit our [website](#) to learn more.

Transplant Mentoring Program

The program matched 80 people waiting for a transplant (mentees) with a mentor. The mentoring program saw referrals from 47 transplant programs nationwide. Mentees included 26 living donors and the following recipients: 3 heart, 9 lung, 17 liver, 22 kidney and 3 other.

Mentors included 14 living donors and recipients: 14 heart, 7 lung, 19 liver, 32 kidney and 8 other.



Here are what two students said about the in-classroom program.

"I was nervous about the question, but learning about your father-in-law it made me realize that once I die, I cannot only help my friends and family know that my death helped save lives!" – Olathe West High School student

"I really enjoyed this educational speaker and how she highlighted stories from real life that provide a more eye-opening realization to how beneficial donating can be." – Shawnee Mission East High School student

Learn Life Savers

Learn Life Savers is the online version of the Life Savers in-classroom program. Out of the 446 Missouri public school districts, 170 school districts were contacted and encouraged to participate in the virtual course during fiscal year 2025. Of those, 157 districts said yes!

Life Savers

This past year was busy! There were 601 scheduled high school in-person presentations, reaching 13,868 students. Of those students, nearly 95% (13,006 total) completed the survey. In total, the survey results indicated that those students committed to having a conversation with 38,814 individuals about organ donation, and 78.2% of the 13,006 students said that conversation would be with their parent. The vast majority of students (nearly 95%), who responded to the survey said they understood the question and the true meaning of if they wanted to be an organ donor. Of particular note is that 50% of the students indicated they learned about organ donation for the first time through the Life Savers program.

LIFE SAVERS



601 Scheduled High School In-Person Presentations

Presented to 13,868 students



13,006 students completed our survey (94.2%)



A Christmas Miracle: Sight Restored

by Jonah Durbin, Saving Sight

Sieglinde's Story

For months, Sieglinde had been living with excruciating pain and blurred vision in her right eye. "It got so bad I could hardly see straight out of my other eye," she recalled. Sieglinde endured six months of deteriorating vision and persistent discomfort, trying various eye drops and treatments that offered no relief. After countless eye drops and appointments, she reached a breaking point just before the holidays. "I told my doctor, 'You have to do something. I can't take this pain anymore.'" Her optometrist eventually told her, "You need something done right away," and referred her to Dr. Shachar Tauber, who confirmed she needed a cornea transplant immediately.

During her first appointment with Dr. Tauber, Sieglinde remembers asking, "Do you even have any corneas available? I thought I'd have to wait months." He said, "Oh no, we have one right away." She said, "that is such a relief."

Sieglinde had her transplant surgery scheduled for Christmas Day. "I saw Dr. Tauber on Christmas Day—Christmas morning," Sieglinde recalls, "I could hardly see out of my other eye, and he saved everything. He's forever in my heart, I told him, It's a miracle. I mean, who does that? Come in at 6 a.m. on Christmas morning to save someone's sight?"

While she's still undergoing treatment and hopes for continued improvement, Sieglinde is already thankful for what she's gained. She shared, "the pain is gone, and I can see better than before. When your whole head feels like it's floating, and then that pain lifts—well, that's a miracle."

Thanks to the generosity of a donor and the dedication of her surgeon, Sieglinde's pain has subsided, and her vision is steadily improving.

"I'm eternally grateful," she shared. "To the family who gave this gift, I just want to say thank you. It's wonderful that someone would donate so that someone else could see again. I am a donor, and I will do the same."

Sieglinde's story is a powerful reminder of the life-changing impact of eye donation. Through one selfless gift, her pain has lifted, her vision is returning, and her spirit is renewed. "I'll always be thankful," she said. "Because of my donor, I get to see the world again."



Lived Life, Gave Life

Honoring Missouri Donor Hero Joe Hecht

by Nichole Asquith, Midwest Transplant Network

2025 Rose Parade® Recap

Midwest Transplant Network was proud to co-sponsor the OneLegacy Donate Life Rose Parade® float and honor a Missouri donor hero with a floragraph portrait on the nationally televised float.



Honoring Missouri Donor Hero Joe Hecht

Midwest Transplant Network chose Joe Hecht of Sturgeon, Mo., as the 2025 OneLegacy Donate Life Rose Parade® honoree. Joe was 38, a son, husband, father and friend. He died in July 2020 and became an organ donor at MU Health Care in Columbia, Mo., giving the gift of life to two kidney recipients.

Joe grew up with a spirit of adventure. His mother, Sheila, served in the Navy, and their family lived in Florida and Washington. Joe loved baseball, working on cars and listening to “California Love” by Tupac. He and his wife, Melissa, shared a passion for travel and exploration, including trips to the Amazon rain forest and Machu Picchu in Peru. Joe especially loved spending time outdoors with their daughters, Elena and Isabelle.

“We are proud of Joe’s legacy as an organ donor. We always talk about daddy. He’s a hero,” Melissa said. “We are thankful to be invited to represent Joe at the Rose Parade®. It’s a wonderful memory for our family.”

Floragraph Portrait & Missouri Ceremony

Each OneLegacy Donate Life Rose Parade® float features floragraphs, portraits created entirely

from natural materials, e.g., seeds, bark, flowers and spices, honoring organ, eye and tissue donors from across the country. A small portion of each portrait is left unfinished so families can complete the final touches.

In November 2024, MTN hosted a floragraph finishing ceremony in Columbia, Mo., for the Hecht family. Surrounded by friends, representatives from MU Health Care and members of the MTN community, the Hechts completed Joe’s floragraph with great care and emotion.

A Meaningful Week

In December 2024, the Hechts traveled to Pasadena to take part in the full Rose Parade® experience.

Continued on the next page.



Continued from previous page.

Hosted by OneLegacy, donor hero families, transplant recipients and living donors participated in several days of events honoring their loved ones:

- Float decorating: The Hechts helped apply flowers and organic materials to the OneLegacy Donate Life float, experiencing how each element honors donor heroes.
- Float judging: They previewed the completed float and watched as parade judges evaluated it for design and presentation of awards.
- Family remembrance events: The Hechts connected with families from across the nation, sharing stories of healing and hope.
- Parade day: From grandstand seats, the family proudly watched the OneLegacy Donate Life float, featuring Joe's completed floragraph, travel down Colorado Boulevard on New Year's Day. Seeing Joe honored was a moment they will always remember.
- Melissa Hecht said the experience was defined by the people she met along the way: "I'm grateful for every smile, hug and tear shared with the strangers who have become dear friends."



About the 2025 Rose Parade® & Donate Life Float

The 2025 Rose Parade® theme, "Best Day Ever," celebrated joyful moments and the deep impact of meaningful memories.

The OneLegacy Donate Life float, Let Your Life Soar, drew inspiration from Japan's Children's Day celebration. The float featured vibrant koi nobori (fish-shaped windsocks) soaring over flowering trees, stone lanterns and a traditional bridge. Streamers formed a family crest, followed by koi symbolic of father, mother and children.

In Japanese culture, koi represent strength, courage and health — qualities shared by donor heroes, the families who support their decision, and the recipients whose lives are transformed. The scales of the koi are included in dozens of floragraphs, representing donor heroes nationwide, including Missouri donor hero, Joe Hecht.



Missouri Snapshot

Donate Life Missouri Registry

by Virginia Beatty, Missouri Department of Health and Senior Services

Donor Designation, The Conversation Matters

Donation brings hope to people waiting for an organ, eye, or tissue transplant. A single deceased donor can save the lives of up to eight people and enhance the lives of at least 75 others. Living donors can also restore hope and life to those in need. Living donation, which is donating certain organs and tissues while you are alive, offers an alternative for individuals awaiting transplantation.

Find resources about living donation on the [Donate Life Missouri Living Donation](#) webpage. Registered donors are encouraged to share their decision with family and friends. The conversation matters.

Registry Numbers

The following is a summary of Donate Life Missouri Registry information from July 1, 2024 - June 30, 2025. The data does not include out-of-state registrants.

Registrations

Total 4,472,200

Total Registrants by Fiscal Year

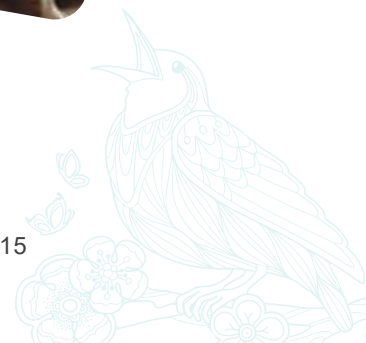
| | |
|-----------|-----------|
| FY20..... | 3,987,273 |
| FY21..... | 4,107,636 |
| FY22..... | 4,210,598 |
| FY23..... | 4,314,144 |
| FY24..... | 4,406,794 |
| FY25..... | 4,472,200 |

Registrants by Age

| | |
|---------------------|---------|
| 65 and older | 960,004 |
| 55-64 | 655,592 |
| 45-54 | 733,840 |
| 35-44 | 903,175 |
| 25-34 | 774,447 |
| 18-24 | 378,472 |
| 15-17 | 63,102 |
| 14 or younger | 3,568 |

Registrants by Sex

| | |
|--------------|--------------------|
| Female | 2,359,164 (52.75%) |
| Male | 2,113,036 (47.35%) |



Missouri Snapshot

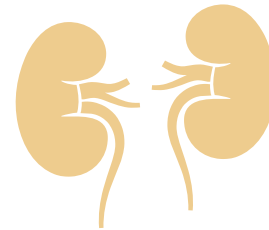
Transplant, Donor Heroes, and Waitlist Statistics

by Virginia Beatty, Missouri Department of Health and Senior Services

The following data is from the United Network of Organ Sharing Organ Procurement and Transplantation Network. The numbers represent candidates where the recipient and donor's state of primary residence is Missouri. The [UNOS Data Reports](#) web page contains additional data. The calendar year being reported below is 2024. Data is subject to change based on future data submissions or corrections.

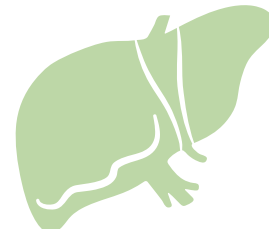
Transplant Recipient by Organ Type Deceased Donors

| | |
|-----------------------|-----|
| Kidney | 488 |
| Liver | 249 |
| Heart | 103 |
| Lung | 63 |
| Kidney-Pancreas | 16 |



Transplant Recipient by Organ Type Living Donors

| | |
|--------------|-----|
| Kidney | 128 |
| Liver | 4 |



Missouri Donor Heroes for 2024, 2023, and 2022 (respectfully)

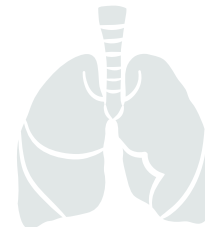
| | | | |
|----------------|-----|-----|-----|
| Deceased | 413 | 420 | 421 |
| Living | 111 | 91 | 101 |



Missourians on the Waitlist by Organ Type

The following numbers represent candidates from Missouri on the waitlist for a transplant. This means a patient who is waiting at more than one center, or for multiple organs, and are counted only once.

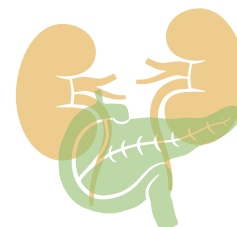
| | |
|-----------------------|-------|
| Kidney | 1,872 |
| Liver | 147 |
| Kidney/Pancreas | 62 |
| Heart | 67 |
| Lung | 23 |



Missourians Removed from the Wait List by Organ Type

Missourians who were too sick or passed away were removed from the waitlist.

| | |
|-------------------|-----|
| Too Sick | 136 |
| Passed Away | 78 |



Missouri Snapshot

Missouri Candidates Ever Waiting by Race/Ethnicity

by Virginia Beatty, Missouri Department of Health and Senior Services

The waitlist data below is from the United Network of Organ Sharing Organ Procurement and Transplantation Network. The numbers represent candidates where the recipient and donor's state of primary residence is Missouri. The [UNOS Data Reports](#) and [UNOS Reports and Dashboards](#) web pages have additional data. The data reported for the 2024 calendar year was pulled on Dec. 19, 2025. Data is subject to change based on future data submissions or corrections.

| | White, Non- Hispanic | Black, Non- Hispanic | Hispanic Latino | Asian, Non- Hispanic Latino | Multi- racial, Non- Hispanic | American Indian, Alaska native, Non- Hispanic | Pacific Islander, Non- Hispanic | Unknown | Organ Type Totals |
|-------------------------------------|----------------------------|----------------------------|--------------------|--------------------------------------|---------------------------------------|--|--|---------|-------------------------|
| Kidney | 793 | 471 | 73 | 47 | 12 | 7 | 7 | 1 | 1,409 |
| Kidney- Pancreas | 40 | 15 | 2 | 0 | 0 | 0 | 0 | 0 | 57 |
| Pancreas | 2 | 0 | 0 | 0 | 0 | 0 | 0 | 0 | 2 |
| Liver | 136 | 12 | 6 | 1 | 1 | 1 | 0 | 4 | 161 |
| Heart | 38 | 8 | 0 | 1 | 3 | 0 | 1 | 0 | 51 |
| Lung | 10 | 1 | 1 | 0 | 0 | 0 | 0 | 0 | 12 |
| Intestine | 1 | 0 | 0 | 0 | 0 | 0 | 0 | 0 | 1 |
| All Organs by Race/ Ethnicity | 1,002 | 500 | 82 | 49 | 16 | 8 | 8 | 5 | |



Missouri Snapshot

Registration by License Office

by Ian Collins, Missouri Department of Health and Senior Services

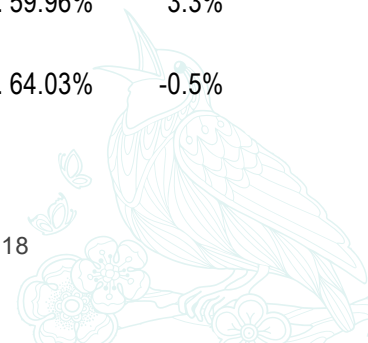
To every Missouri license office clerk: thank you for your part in saving lives of others by helping enroll Missourians in the Donate Life Missouri Registry. You are an integral part of organ, eye and tissue donation.

Data Limitations

Registry participation is for July 2024 through June 30, 2025, and is based on the total transactions and number of individuals responding “yes” to being placed on the registry. Percentages are calculated by location independent of contractor. A contractor change, new office or office closure may alter the percentage. Percent of change refers to change from the previous fiscal year. The office in Cuba closed during the fiscal year and an additional removal path was added. Data is subject to change based on future data submission or correction.

| County/Office Name | | FY25 % of Change | |
|-------------------------|--------|------------------|--|
| ADAIR | | | |
| Kirkville | 48.14% | -3.3% | |
| ANDREW | | | |
| Savannah | 58.56% | -0.4% | |
| ATCHISON | | | |
| Rock Port..... | 61.20% | 2.9% | |
| AUDRAIN | | | |
| Mexico | 52.62% | -19.3% | |
| BARRY | | | |
| Cassville | 53.00% | 4.1% | |
| Monett | 49.37% | -10.8% | |
| BARTON | | | |
| Lamar | 55.64% | -2.3% | |
| BATES | | | |
| Butler | 57.79% | -0.8% | |
| BENTON | | | |
| Warsaw | 48.07% | -4.5% | |
| BOLLINGER | | | |
| Marble Hill..... | 44.81% | 2.4% | |
| BOONE | | | |
| Columbia | 52.03% | -4.8% | |
| Columbia South | 64.22% | -4.4% | |
| BUCHANAN | | | |
| Saint Joseph | 50.08% | -13.1% | |
| BUTLER | | | |
| Poplar Bluff | 45.92% | -2.8% | |
| CALDWELL | | | |
| Kingston..... | 59.34% | -4.9% | |
| CALLAWAY | | | |
| Fulton | 53.47% | 2.5% | |
| CAMDEN | | | |
| Camdenton | 46.85% | -22.7% | |
| CAPE GIRARDEAU | | | |
| Cape Girardeau | 51.51% | -20.8% | |
| Jackson | 59.92% | 1.2% | |
| CARROLL | | | |
| Carrollton | 52.41% | -13.6% | |
| CARTER | | | |
| Van Buren | 42.84% | -0.5% | |
| CASS | | | |
| Belton | 58.47% | -2.3% | |
| Harrisonville | 61.02% | -0.2% | |
| CEDAR | | | |
| Stockton..... | 56.87% | 4.1% | |
| CHARITON | | | |
| Keytesville | 48.74% | -0.3% | |
| CHRISTIAN | | | |
| Nixa | 63.26% | -2.7% | |
| Ozark..... | 62.45% | -1.2% | |
| CLARK | | | |
| Kahoka | 59.96% | 3.3% | |
| CLAY | | | |
| Excelsior Springs | 64.03% | -0.5% | |

Continued on the next page.



Continued from the previous page.

CLAY continued

| | | |
|-------------------------|--------|--------|
| Gladstone | 51.84% | -1.1% |
| Liberty..... | 62.10% | -2.1% |
| North Kansas City | 44.8% | -24.2% |

CLINTON

| | | |
|------------------|--------|-------|
| Cameron..... | 58.91% | -0.5% |
| Plattsburg | 60.04% | 1.4% |

COLE

| | | |
|----------------------------------|--------|-------|
| Jefferson City..... | 54.50% | -5.1% |
| Jefferson City Mini Branch | 53.97% | -6.9% |

COOPER

| | | |
|----------------|--------|------|
| Boonville..... | 56.00% | 0.6% |
|----------------|--------|------|

CRAWFORD

| | | |
|------------------|--------|--------|
| Cuba..... | 14.70% | -73.6% |
| Steelville | 54.13% | 4.9% |

DADE

| | | |
|------------------|--------|------|
| Greenfield | 55.01% | 0.5% |
|------------------|--------|------|

DALLAS

| | | |
|---------------|--------|------|
| Buffalo | 49.00% | 1.4% |
|---------------|--------|------|

DAVISS

| | | |
|----------------|--------|-------|
| Gallatin | 50.53% | -8.7% |
|----------------|--------|-------|

DENT

| | | |
|-------------|--------|-------|
| Salem | 46.67% | -3.1% |
|-------------|--------|-------|

DOUGLAS

| | | |
|-----------|--------|-------|
| Ava | 43.94% | -0.3% |
|-----------|--------|-------|

DUNKLIN

| | | |
|--------------|--------|--------|
| Kennett..... | 41.68% | -19.2% |
| Malden..... | 41.89% | 4.1% |

FRANKLIN

| | | |
|-----------------|--------|-------|
| Pacific..... | 64.87% | -2.6% |
| St. Clair..... | 54.28% | 2.0% |
| Union | 60.90% | 3.1% |
| Washington..... | 60.89% | -1.5% |

GASCONADE

| | | |
|------------------|--------|-------|
| Hermann..... | 57.62% | -1.5% |
| Owensville | 51.86% | 0.1% |

GENTRY

| | | |
|----------------|--------|-------|
| Stanberry..... | 59.17% | -0.8% |
|----------------|--------|-------|

GREENE

| | | |
|-------------------------|--------|-------|
| Glenstone | 58.19% | -1.9% |
| Republic..... | 60.20% | -0.5% |
| South Springfield | 58.04% | -2.4% |
| Springfield..... | 50.17% | -2.0% |

GRUNDY

| | | |
|---------------|--------|------|
| Trenton | 49.14% | 0.7% |
|---------------|--------|------|

HARRISON

| | | |
|---------------|--------|------|
| Bethany | 51.74% | 5.1% |
|---------------|--------|------|

HENRY

| | | |
|---------------|--------|-------|
| Clinton | 55.27% | -7.7% |
|---------------|--------|-------|

HICKORY

| | | |
|-----------------|--------|------|
| Hermitage | 53.42% | 1.7% |
|-----------------|--------|------|

HOWARD

| | | |
|---------------|--------|------|
| Fayette | 54.96% | 0.2% |
|---------------|--------|------|

HOWELL

| | | |
|----------------------|--------|--------|
| Mountain View | 48.70% | 5.1% |
| West Plains..... | 47.50% | -23.8% |
| Willow Springs | 50.62% | -2.5% |

IRON

| | | |
|---------------------|--------|-------|
| Arcadia Valley..... | 47.28% | 2.4% |
| Viburnum | 45.47% | 26.6% |

JACKSON

| | | |
|--------------------|--------|--------|
| Blue Springs | 59.44% | -3.2% |
| Grandview..... | 41.66% | -4.4% |
| Independence | 47.76% | -20.1% |
| Kansas City..... | 38.03% | 4.2% |
| Lees Summit..... | 58.08% | -3.6% |
| Raytown..... | 32.35% | -2.2% |
| Sugar Creek..... | 48.07% | -9.0% |

JASPER

| | | |
|---------------|--------|-------|
| Carthage..... | 51.17% | -3.3% |
| Joplin | 59.28% | 0.0% |
| Sarcoxi..... | 51.38% | 0.1% |

JEFFERSON

| | | |
|-----------------|--------|-------|
| Arnold | 59.82% | -1.7% |
| DeSoto..... | 54.97% | -1.8% |
| High Ridge..... | 57.61% | 1.5% |
| Imperial..... | 62.28% | 1.4% |
| Twin City | 56.64% | -2.9% |

JOHNSON

| | | |
|-------------------|--------|------|
| Warrensburg | 60.11% | 0.4% |
|-------------------|--------|------|

KNOX

| | | |
|-------------|--------|------|
| Edina | 49.43% | 5.4% |
|-------------|--------|------|

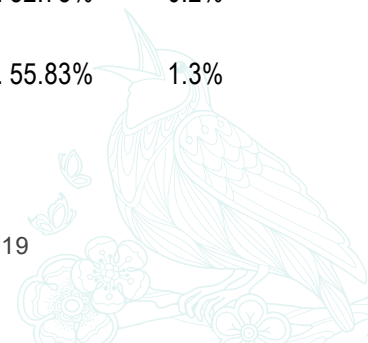
LACLEDE

| | | |
|--------------|--------|------|
| Lebanon..... | 52.75% | 0.2% |
|--------------|--------|------|

LAFAYETTE

| | | |
|-----------------|--------|------|
| Lexington | 55.83% | 1.3% |
|-----------------|--------|------|

Continued on the next page.



Continued from the previous page.

LAWRENCE

| | | |
|--------------------|--------|-------|
| Aurora..... | 52.87% | -6.3% |
| Mount Vernon | 55.51% | -5.2% |

LEWIS

| | | |
|------------------|--------|-------|
| Monticello | 57.47% | -3.0% |
|------------------|--------|-------|

LINCOLN

| | | |
|----------------|--------|-------|
| Elsberry | 58.96% | 3.0% |
| Troy | 58.33% | -0.6% |

LINN

| | | |
|-----------------|--------|-------|
| Brookfield..... | 55.18% | -0.6% |
|-----------------|--------|-------|

LIVINGSTON

| | | |
|-------------------|--------|------|
| Chillicothe | 58.66% | 0.6% |
|-------------------|--------|------|

MACON

| | | |
|------------|--------|-------|
| Macon..... | 53.79% | -1.6% |
|------------|--------|-------|

MADISON

| | | |
|---------------------|--------|------|
| Fredericktown | 49.60% | 2.2% |
|---------------------|--------|------|

MARIES

| | | |
|--------------|--------|------|
| Vienna | 54.25% | 4.8% |
|--------------|--------|------|

MARION

| | | |
|----------------|--------|--------|
| Hannibal | 55.97% | -3.2% |
| Palmyra | 13.93% | -76.3% |

MCDONALD

| | | |
|-----------------|--------|------|
| Pineville | 50.04% | 1.1% |
|-----------------|--------|------|

MERCER

| | | |
|-----------------|--------|------|
| Princeton | 54.04% | 6.8% |
|-----------------|--------|------|

MILLER

| | | |
|-------------|--------|-------|
| Eldon | 57.86% | -4.4% |
|-------------|--------|-------|

MISSISSIPPI

| | | |
|------------------|--------|------|
| Charleston | 41.38% | 8.6% |
|------------------|--------|------|

MONITEAU

| | | |
|------------------|--------|------|
| California | 56.26% | 1.1% |
|------------------|--------|------|

MONROE

| | | |
|-------------------|--------|-------|
| Monroe City | 57.30% | -0.1% |
| Paris | 57.67% | 5.4% |

MONTGOMERY

| | | |
|----------------------|--------|------|
| Montgomery City..... | 58.99% | 1.0% |
|----------------------|--------|------|

MORGAN

| | | |
|------------------|--------|------|
| Versailles | 53.02% | 0.2% |
|------------------|--------|------|

NEW MADRID

| | | |
|-----------------|--------|-------|
| New Madrid..... | 35.28% | -7.0% |
|-----------------|--------|-------|

NEWTON

| | | |
|--------------|--------|-------|
| Neosho | 49.99% | -6.8% |
|--------------|--------|-------|

NODAWAY

| | | |
|-----------------|--------|------|
| Maryville | 59.60% | 4.4% |
|-----------------|--------|------|

OREGON

| | | |
|-------------|--------|-------|
| Alton | 38.24% | -4.2% |
|-------------|--------|-------|

OSAGE

| | | |
|-----------|--------|------|
| Linn..... | 59.51% | 1.9% |
|-----------|--------|------|

OZARK

| | | |
|-------------------|--------|------|
| Gainesville | 49.92% | 0.0% |
|-------------------|--------|------|

PEMISCOT

| | | |
|---------------------|--------|--------|
| Caruthersville..... | 36.96% | -12.6% |
|---------------------|--------|--------|

PERRY

| | | |
|-----------------|--------|------|
| Perryville..... | 52.56% | 2.3% |
|-----------------|--------|------|

PETTIS

| | | |
|---------------|--------|-------|
| Sedalia | 48.81% | -1.6% |
|---------------|--------|-------|

PHELPS

| | | |
|-------------|--------|-------|
| Rolla | 48.31% | -5.5% |
|-------------|--------|-------|

PIKE

| | | |
|---------------------|--------|-------|
| Bowling Green | 53.20% | 2.9% |
| Louisiana | 56.58% | 11.9% |

PLATTE

| | | |
|-------------------|--------|--------|
| Parkville..... | 57.89% | -17.9% |
| Platte City | 66.50% | -0.6% |

POLK

| | | |
|---------------|--------|------|
| Bolivar | 55.15% | 0.9% |
|---------------|--------|------|

PULASKI

| | | |
|------------------|--------|-------|
| Waynesville..... | 50.85% | -2.4% |
|------------------|--------|-------|

PUTNAM

| | | |
|------------------|--------|-------|
| Unionville | 44.25% | 20.2% |
|------------------|--------|-------|

RALLS

| | | |
|-----------------|--------|-------|
| New London..... | 57.16% | -3.3% |
|-----------------|--------|-------|

RANDOLPH

| | | |
|--------------|--------|--------|
| Moberly..... | 54.78% | -21.5% |
|--------------|--------|--------|

RAY

| | | |
|---------------|--------|------|
| Richmond..... | 53.67% | 1.4% |
|---------------|--------|------|

REYNOLDS

| | | |
|----------------|--------|-------|
| Ellington..... | 43.02% | 12.1% |
|----------------|--------|-------|

RIPLEY

| | | |
|----------------|--------|------|
| Doniphan | 44.92% | 4.7% |
|----------------|--------|------|

SALINE

| | | |
|----------------|--------|-------|
| Marshall | 45.89% | -3.8% |
|----------------|--------|-------|

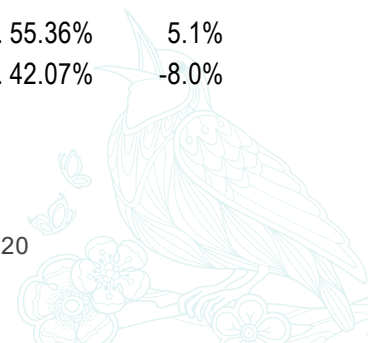
SCOTLAND

| | | |
|---------------|--------|--------|
| Memphis | 22.88% | -46.3% |
|---------------|--------|--------|

SCOTT

| | | |
|---------------|--------|-------|
| Chaffee | 55.36% | 5.1% |
| Sikeston..... | 42.07% | -8.0% |

Continued on the next page.



Continued from the previous page.

SHANNON

Eminence..... 44.15% 0.8%

SHELBY

Shelbina..... 54.81% 2.4%

ST CHARLES

Harvester 59.8% 0.2%

O'Fallon 55.08% -8.9%

St Charles..... 53.19% 3.2%

Wentzville 58.08% -2.1%

ST CLAIR

Osceola 51.90% 5.6%

ST FRANCOIS

Bonne Terre 52.12% -0.9%

Farmington..... 47.51% 2.3%

ST LOUIS

Aftton 49.40% -7.4%

Bridgeton 30.68% -5.2%

Chesterfield..... 59.68% -2.1%

Clayton 52.89% -13.1%

Creve Coeur 44.25% -2.7%

Des Peres..... 65.67% 0.2%

Florissant..... 27.85% -5.1%

Maplewood 58.87% -8.6%

North County..... 16.61% -0.2%

Oakville..... 47.87% -5.0%

Olivette 37.83% -3.8%

Overland..... 30.02% -8.9%

South County..... 57.28% -5.4%

West County 58.69% -2.9%

ST LOUIS CITY

Central West End..... 33.49% 51.3%

Downtown..... 23.46% 85.3%

South Kings Highway 30.93% -10.1%

STE GENEVIEVE

Ste Genevieve 60.64% -2.9%

STODDARD

Dexter 47.94% -0.7%

STONE

Branson West 57.54% 1.5%

Crane..... 53.34% -1.2%

SULLIVAN

Milan..... 42.11% -4.3%

TANEY

Branson 50.65% -2.3%

Forsyth..... 59.55% -2.1%

TEXAS

Houston 46.95% -2.8%

VERNON

Nevada 55.82% 2.6%

WARREN

Warrenton 55.78% -4.2%

WASHINGTON

Potosi 40.45% -24.5%

WAYNE

Piedmont 45.42% 5.7%

WEBSTER

Rogersville..... 57.87% 0.5%

Marshfield 53.54% -4.1%

WRIGHT

Hartville 44.62% 1.9%

Mountain Grove 44.52% 11.3%





Live Life. Give Life.

MISSOURI ORGAN AND TISSUE DONOR PROGRAM

Missouri Department of Health and Senior Services

P.O. Box 570

Jefferson City, MO 65102-0570

573-522-2847 or toll-free 888-497-4564

DonateLifeMissouri.org

Health.Mo.Gov/OrganDonor

Individuals who are deaf, hard-of-hearing or have a speech disability
can dial 711 or 1-800-735-2966.



MISSOURI DEPARTMENT OF
**HEALTH &
SENIOR SERVICES**